

**AVAILABILITY
IMMEDIATE**



ZAC LA ROQUE D'ANTHÉRON

SECTORS SERVED

Industrial, logistics and office activities

TYPES OF ACTIVITIES ACCEPTED ON SITE

Site suitable for industrial activities



PROPERTY DESCRIPTION AND TECHNICAL SPECIFICATIONS

TYPE	Land
OFFER	Purchase
PRICE	€615 960 (excluding taxes)
LOCATION	La Roque d'Anthéron
TOTAL SURFACE AVAILABLE	10 260 m ² / floorspace = 6570 m ²
PARCELS / AVAILABLE LOTS	35 000 m ²
MAXIMUM HEIGHT / FOOTPRINT COEFFICIENT	Building height: 8m (160m altitude) Building to land ratio: : 0.7 (0.4 for buildings) Green spaces to land ratio: 0.2
PLOT OWNER	Aix-Marseille Provence Metropolis
SITE CLASSIFICATION	Land located in a ZAC commercial activity zone
SERVITUDES	Not communicated



TIMELINE

AVAILABILITY	Immediate
PLANNING PERMISSION	3 months
ENVIRONMENTAL PERMITS AND STUDIES ALREADY COMPLETED	Clearance authorization obtained Water law authorization obtained Archaeological diagnosis carried out

ACCESS

ACCESS
Train/TGV: 50min (Aix-en-Provence TGV)
Freeway: 15min (A7)
Airport: 45min

PUBLIC TRANSPORTATION



SERVICES / AMENITIES

WATER	Potable water and wastewater: standpipe connections at lot boundaries Fire water (public roads)
GAS CONNECTION	Yes Possibility of direct connection to GRT Gaz network
ELECTRICAL POWER	Medium voltage (240 kVa)
SANITATION & STORMWATER MANAGEMENT	Yes Connection to the stone's stormwater retention system
CONNECTIVITY	High-speed broadband
HIGHWAY JUNCTION	No
OTHER FEATURES	
SERVICES FOR BUSINESSES AND EMPLOYEES	Shops and restaurants, site 5 minutes from the village of La Roque d'Anthéron



ECOSYSTEM

TRAINING, HIGHER
EDUCATION & RESEARCH

POTENTIAL PARTNERS

TRANSPORT BISCARAT, JACQUEMUS,
SPURGIN



FINANCING

ZONING: FINANCING &
PUBLIC ASSISTANCE
AVAILABLE

PARC + zone



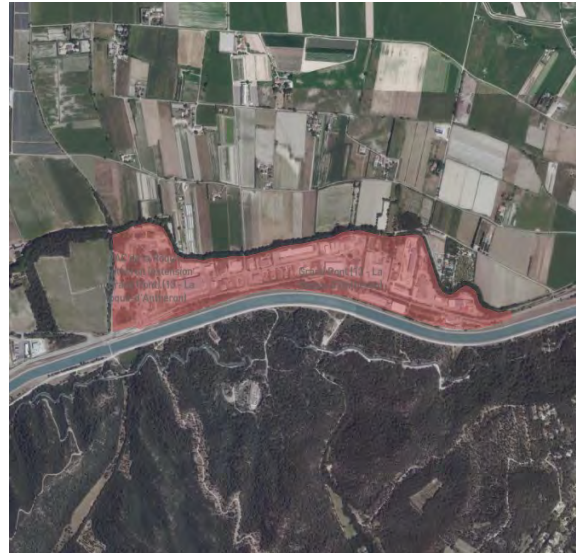
ILLUSTRATIONS

TO VIEW THE SITE WITH THE
OBSERVATOIRE SUD FONCIER ECO
[IN FRENCH]

[CLICK HERE](#)



PLOT VIEWER



Your contact

Anne-Charlotte DEARBIEUX

 acdebarbieux@risingsud.fr

risingSUD

Opportunities & Investments
in Provence-Alpes-Côte d'Azur